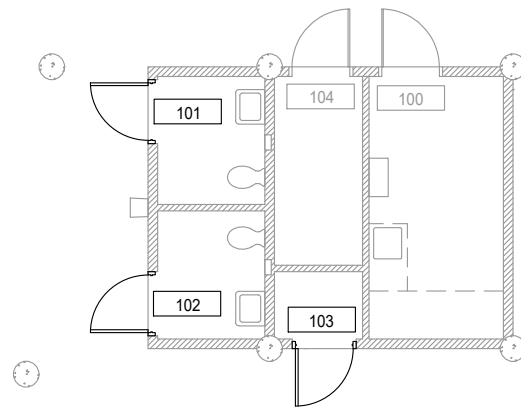


KEY MAP

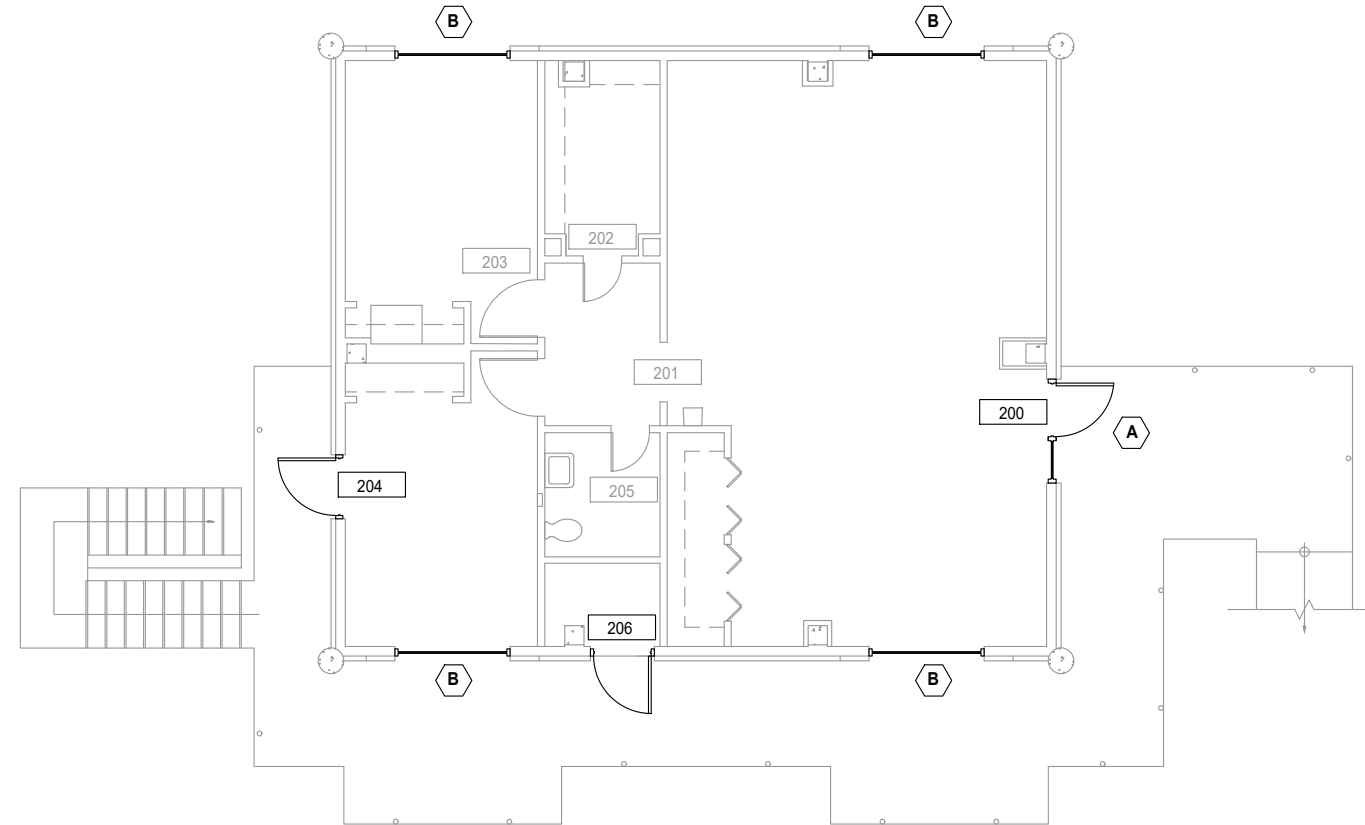


PLAN VIEW

SCALE: N/A
 ARCH REF: 1/A101-B
 5/A101-B
 Doors: 101, 102, 103

01 HEADQUARTERS - LEVEL 1

KAWNEER 350 STANDARD DOORS ON 451T ALUMINUM FRAME



PLAN VIEW

SCALE: N/A
 ARCH REF: 3/A101-B
 7/A101-B
 QUANTITY: TYPE A - 1
 TYPE B - 4
 DOORS: 200, 204, 206

01 HEADQUARTERS - LEVEL 2

KAWNEER 451T ALUMINUM STOREFRONT
 KAWNEER 350 STANDARD DOOR FRAMES ON 451T FRAME
 KAWNEER IR-501 IMPACT ALUMINUM FRAME
 KAWNEER 350 IMPACT DOOR FRAME ON IR-501 IMPACT ALUMINUM FRAME

NO.	DATE	BY	DESCRIPTION
1	03/05/22	fp	First Submittal

EVINS GLASS SERVICE, INC
 101 N.P.I.D., CORPUS CHRISTI, TX 78406
 WORK (361) 884-3995 FAX (361) 884-4262

PROJECT: MUSTANG ISLAND STATE PARK
HEADQUARTERS RENOVATION
 ARCHITECT: TEXAS PARKS & WILDLIFE, PDG
 (361) 288-5586
 GENERAL CONTRACTOR: COAST 2 COAST
 361-816-3183

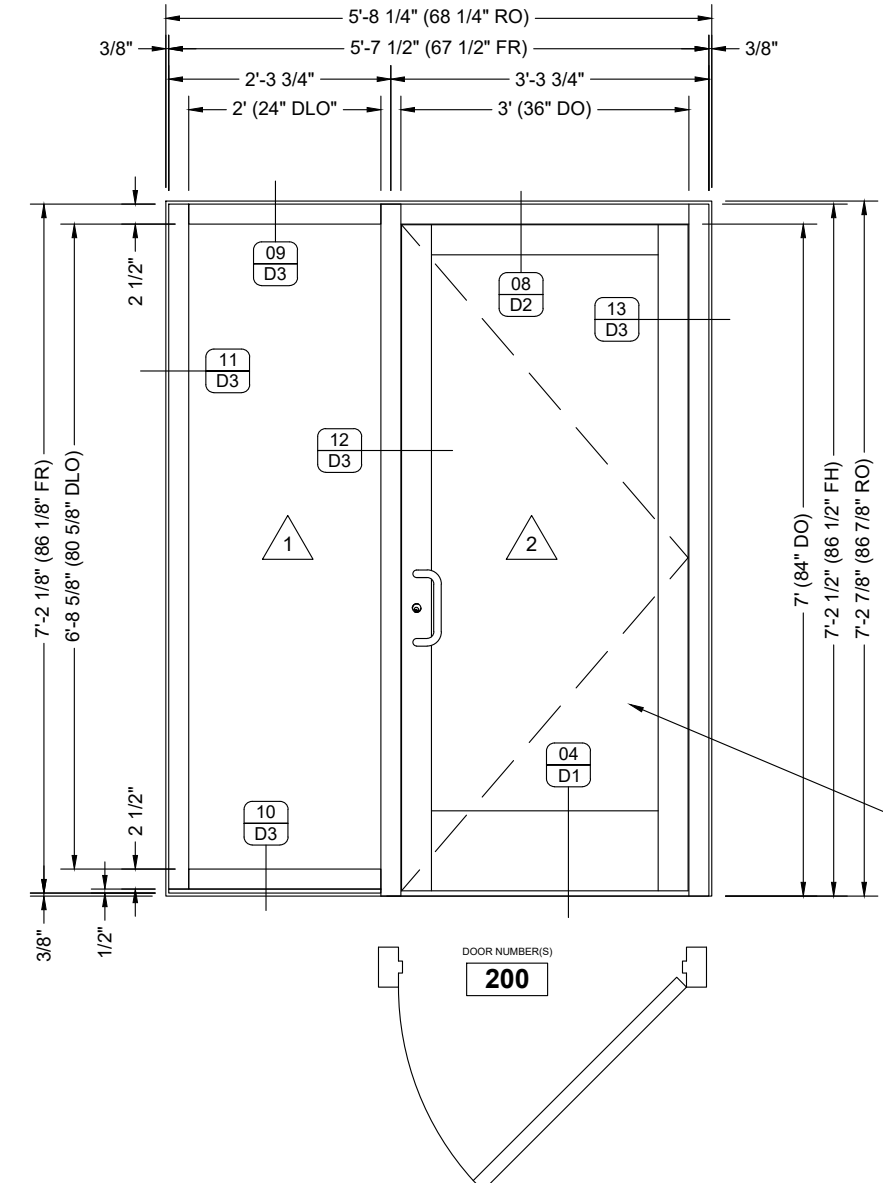
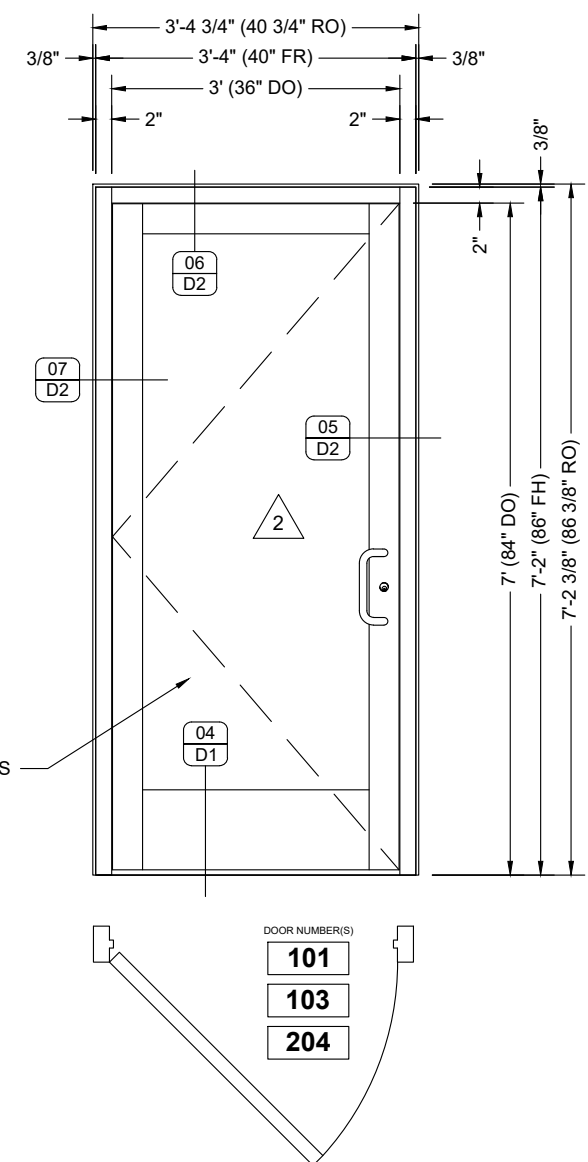
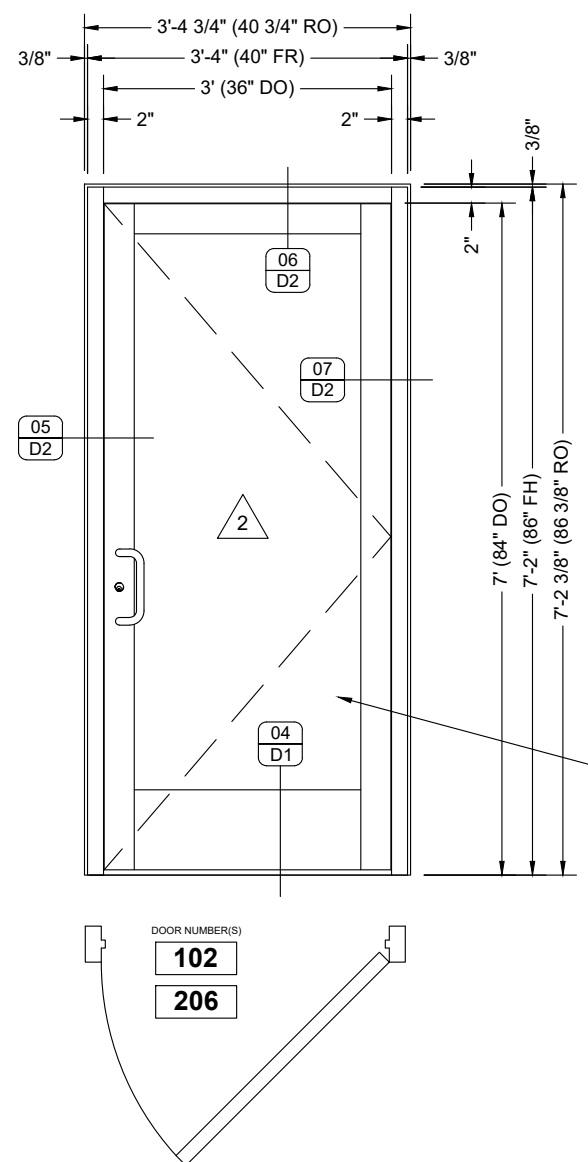
PROJECT NO.	EGS-2203-01
DRAWN BY	fp
DATE	03/05/22
SCALE	NTS
DRAWING	FLOOR PLANS
SHEET	P1

NO.	DATE	DESCRIPTION
1	03/05/22	First Submittal

EVINS GLASS SERVICE, INC
 101 N.P.I.D., CORPUS CHRISTI, TX 78406
 WORK (361) 884-3995 FAX (361) 884-4262

PROJECT: MUSTANG ISLAND STATE PARK
HEADQUARTERS RENOVATION
 ARCHITECT: TEXAS PARKS & WILDLIFE, PDG
 (361) 281-5566
 GENERAL CONTRACTOR: COAST 2 COAST
 (361) 810-3183

PROJECT NO.	EGS-2203-01
DRAWN BY	fp
DATE	03/05/22
SCALE	1/2" = 1'-0"
DRAWING	ELEVATIONS
SHEET	E1



ELEVATION **(RH)** **RIGHT-HAND SWING SINGLE DOOR**
 QUANTITY: 03
 SCALE: 1/2" = 1'-0"
 ARCH REF: 1/A101-B 3/A101-B 5/A101-B 7/A101-B

ELEVATION **(LH)** **LEFT-HAND SWING SINGLE DOOR**
 QUANTITY: 02
 SCALE: 1/2" = 1'-0"
 ARCH REF: 1/A101-B 3/A101-B 5/A101-B 7/A101-B

ELEVATION **(A)** **ENTRANCE**
 QUANTITY: 01
 SCALE: 1/2" = 1'-0"
 ARCH REF: 1/A101-B 3/A101-B 5/A101-B 7/A101-B

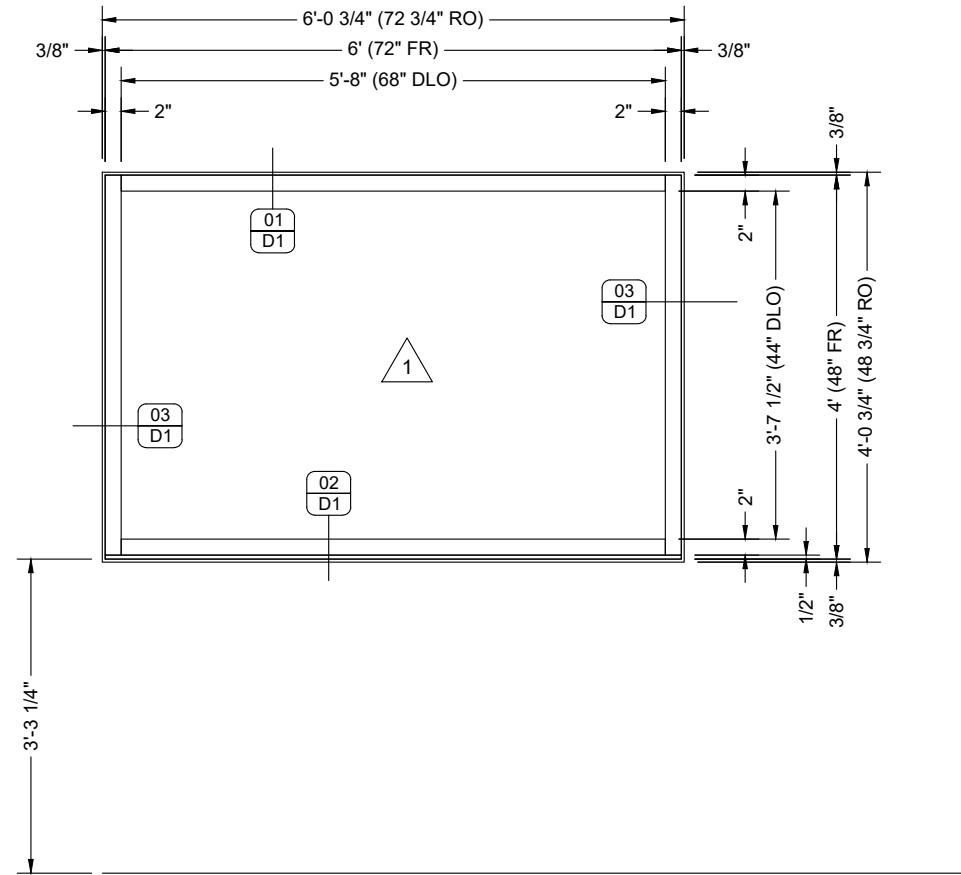
ALUMINUM PANELS

ALUMINUM PANEL

DOOR NUMBER(S)
 102
 206

DOOR NUMBER(S)
 101
 103
 204

DOOR NUMBER(S)
 200



ELEVATION

QUANTITY: 04
 SCALE: 1/2" = 1'-0"
 ARCH REF: 1/A101-B

B

ALUMINUM STOREFRONT
 KAWNEER 451T ALUMINUM STOREFRONT

3/A101-B 5/A101-B 7/A101-B

NO.	DATE	DESCRIPTION
1	03/05/22	First Submittal

EVINS GLASS SERVICE, INC
 101 N.P.I.D., CORPUS CHRISTI, TX 78406
 WORK (361) 884-3995 FAX (361) 884-4262

PROJECT: MUSTANG ISLAND STATE PARK
HEADQUARTERS RENOVATION
 ARCHITECT: TEXAS PARKS & WILDLIFE, PDG
 (361) 288-5666
 GENERAL CONTRACTOR: COAST 2 COAST
 (361) 810-3183

PROJECT NO.	EGS-2203-01
DRAWN BY	fp
DATE	03/05/22
SCALE	1/2" = 1'-0"
DRAWING	ELEVATIONS
SHEET	E2

